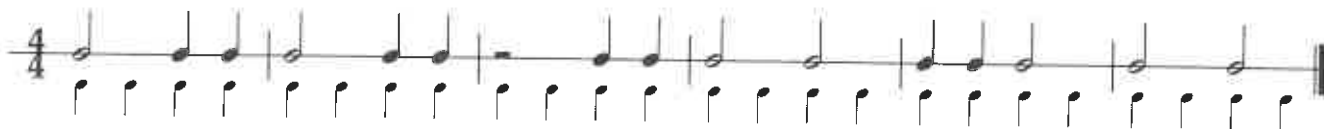


STAGE 4

F major

RHYTHMIC EXERCISES

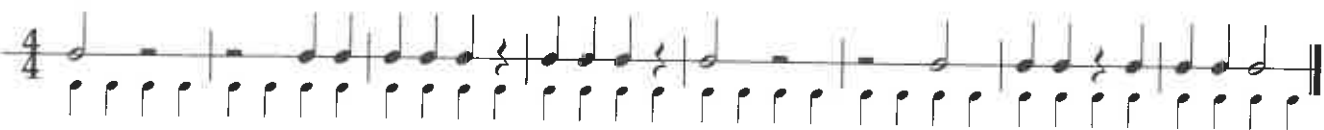
1



2



3



4



MELODIC EXERCISES

1



1

2



△

1

3



1

4

1

1

Exercise 4 is in 3/4 time with a key signature of one flat (B-flat). The melody in the treble clef starts on G4, moves to A4, Bb4, and C5 in the first measure, then continues with a descending line: Bb4, A4, G4, F4, E4, D4, C4. The bass line is mostly rests, with a descending line starting in measure 5: G3, F3, E3, D3, C3, B2, A2, G2.

5

4

Exercise 5 is in 4/4 time with a key signature of one flat (B-flat). The melody in the treble clef starts with a quarter rest, then moves to G4, A4, Bb4, and C5 in the first measure, followed by a descending line: Bb4, A4, G4, F4, E4, D4, C4. The bass line is mostly rests, with a descending line starting in measure 3: G3, F3, E3, D3, C3, B2, A2, G2.

2

Exercise 5 continues in measures 5-8. The melody in the treble clef is mostly rests, with a descending line starting in measure 5: G4, F4, E4, D4, C4, Bb4, A4, G4. The bass line continues its descending line: G3, F3, E3, D3, C3, B2, A2, G2.

6

1

1

Exercise 6 is in 3/4 time with a key signature of one flat (B-flat). The melody in the treble clef starts with a quarter rest, then moves to G4, A4, Bb4, and C5 in the first measure, followed by a descending line: Bb4, A4, G4, F4, E4, D4, C4. The bass line is mostly rests, with a descending line starting in measure 5: G3, F3, E3, D3, C3, B2, A2, G2.

7

5

5

Exercise 7 is in 4/4 time with a key signature of one flat (B-flat). The melody in the treble clef is mostly rests, with a descending line starting in measure 5: G4, F4, E4, D4, C4, Bb4, A4, G4. The bass line starts with a descending line: G3, F3, E3, D3, C3, B2, A2, G2.

PREPARED PIECE

- 1 In which key is this piece written?
- 2 Mark a cross above the B flats.
- 3 What do you notice about the way the dynamic levels are split between the hands?
- 4 What does *Andante* mean?
- 5 What will you count?
- 6 What is the interval formed by the first two notes (left hand)?

Total:

Andante



Unprepared tests page 29

Mark:

Prepared work total:

Unprepared:

Total:

Running totals:

1	2	3	4
<input type="text"/>	<input type="text"/>	<input type="text"/>	<input type="text"/>