

STAGE 1

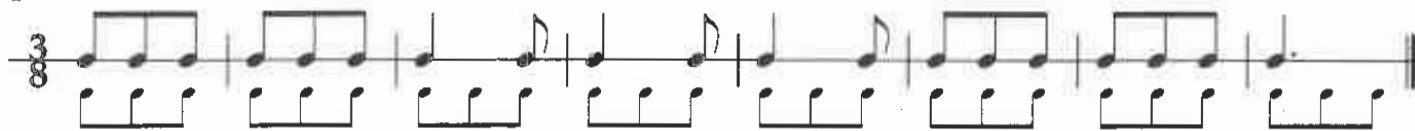
Counting in quavers

 $\frac{3}{8}$

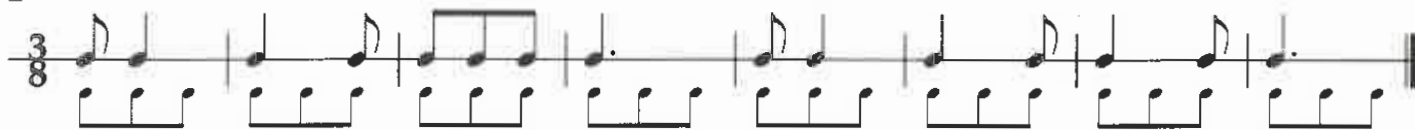
Count all the work in this stage in quavers (♩).

RHYTHMIC EXERCISES

1



2



3



MELODIC EXERCISES

1



2



3



4

1 2 1 2 1

This system contains measures 4 through 8. The key signature has two sharps (F# and C#), and the time signature is 3/8. Measure 4 has a triplet of eighth notes in the treble (F#, G#, A) and a dotted quarter note in the bass (F#). Measure 5 has eighth notes (G#, A, B) in the treble and a dotted quarter note (G#) in the bass. Measure 6 has eighth notes (A, B, C) in the treble and a dotted quarter note (A) in the bass. Measure 7 has a whole rest in the treble and eighth notes (B, A, G) in the bass. Measure 8 has a whole rest in the treble and eighth notes (F#, E, D) in the bass. Fingering numbers 1, 2, 1, 2, 1 are placed below the bass staff notes.

5

5 1

This system contains measures 9 through 16. Measure 9 has a whole rest in the treble and eighth notes (C, B, A) in the bass. Measure 10 has eighth notes (G#, F#, E) in the treble and eighth notes (G#, F#, E) in the bass. Measure 11 has eighth notes (D, C, B) in the treble and eighth notes (D, C, B) in the bass. Measure 12 has eighth notes (A, G#, F#) in the treble and eighth notes (A, G#, F#) in the bass. Measure 13 has eighth notes (E, D, C) in the treble and eighth notes (E, D, C) in the bass. Measure 14 has eighth notes (B, A, G) in the treble and eighth notes (B, A, G) in the bass. Measure 15 has eighth notes (F#, E, D) in the treble and eighth notes (F#, E, D) in the bass. Measure 16 has eighth notes (C, B, A) in the treble and eighth notes (C, B, A) in the bass. Fingering numbers 5 and 1 are placed above the first notes of measures 9 and 13 respectively.

6

1 5

This system contains measures 17 through 24. Measure 17 has a whole rest in the treble and eighth notes (G#, F#, E) in the bass. Measure 18 has eighth notes (D, C, B) in the treble and eighth notes (D, C, B) in the bass. Measure 19 has eighth notes (A, G#, F#) in the treble and eighth notes (A, G#, F#) in the bass. Measure 20 has eighth notes (E, D, C) in the treble and eighth notes (E, D, C) in the bass. Measure 21 has eighth notes (B, A, G) in the treble and eighth notes (B, A, G) in the bass. Measure 22 has eighth notes (F#, E, D) in the treble and eighth notes (F#, E, D) in the bass. Measure 23 has eighth notes (C, B, A) in the treble and eighth notes (C, B, A) in the bass. Measure 24 has eighth notes (G#, F#, E) in the treble and eighth notes (G#, F#, E) in the bass. Fingering numbers 1 and 5 are placed above the first notes of measures 20 and 17 respectively.

7

5 3

This system contains measures 25 through 32. Measure 25 has eighth notes (F#, E, D) in the treble and eighth notes (F#, E, D) in the bass. Measure 26 has eighth notes (C, B, A) in the treble and eighth notes (C, B, A) in the bass. Measure 27 has eighth notes (G#, F#, E) in the treble and eighth notes (G#, F#, E) in the bass. Measure 28 has eighth notes (D, C, B) in the treble and eighth notes (D, C, B) in the bass. Measure 29 has eighth notes (A, G#, F#) in the treble and eighth notes (A, G#, F#) in the bass. Measure 30 has eighth notes (E, D, C) in the treble and eighth notes (E, D, C) in the bass. Measure 31 has eighth notes (B, A, G) in the treble and eighth notes (B, A, G) in the bass. Measure 32 has eighth notes (F#, E, D) in the treble and eighth notes (F#, E, D) in the bass. Fingering numbers 5 and 3 are placed above the first notes of measures 25 and 30 respectively.

- 1 What musical 'shape' are bars 1, 3 and 7/8 based on?
- 2 What does the dot under the last note indicate?
- 3 What will you count?
- 4 What does *Allegretto* mean?
- 5 What do you think the mood of the piece is?
- 6 How will you achieve it?

Allegretto